



ITT

BURNY

PHANTOM

PC-based Controller



The most advanced technology in PC-based controls for maximizing productivity, improving quality, and reducing costs!

BURNY PHANTOM

The Burny PHANTOM is a completely integrated Control System featuring a PC-based numerical control, 2 or 3 axis drive amplifiers and a comprehensive operators console. The PHANTOM provides the latest advances in CNC technology on a proven platform engineered to increase productivity and reduce costs.

Utilizing Windows® XP Embedded, the PHANTOM produces extremely precise and repeatable motion control and contains many features not found in other numerical controls such as true multitasking and DXF file conversion. The operators console contains functions for up to 6 oxy fuel stations and 2 plasma stations along with markers and auxiliary functions. The PHANTOM also features integrated 2 or 3 axis AC or DC drives.

The Burny PHANTOM can operate any cutting machine and interfaces with virtually all processes including:

oxyfuel, plasma, laser, waterjet, routers, punches, drills, knives and markers. It is available as an upgrade to existing machines or can be delivered on a new machine. Supported by Burny's extensive staff of experienced in-house engineers and service technicians, the PHANTOM is ready to perform for you today!

As a premium member of the Burny family of numerical controls, the Burny PHANTOM continues a 35-year history of improving the productivity and increasing the profits of our worldwide customer base. In addition to our industry leading line of numerical controls, Burny also offers drive systems, AC and DC motors, gearboxes, torch stations and height control systems. Demand Burny and contact us today to learn more about the value only Burny can provide.



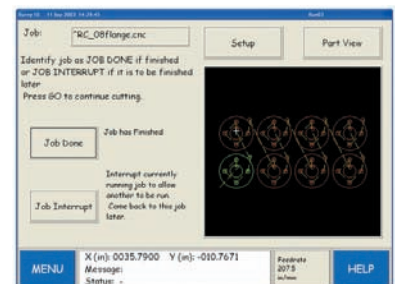
STANDARD FEATURES

Bright Touch Screen Interface

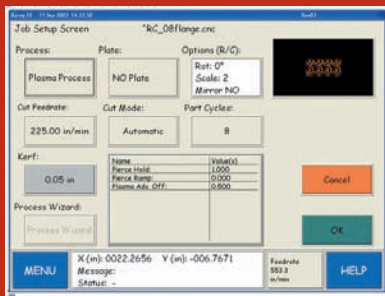
With a 10.4" (264 mm) industrial-grade touch screen, the PHANTOM provides an extremely user-friendly machine interface. The wide viewing angle and high resolution graphics generate a bright display even in the harshest shop floor environment, allowing operators to easily and effectively move through the menus and guide the cutting machine.

Full Color, Interactive Graphic Display

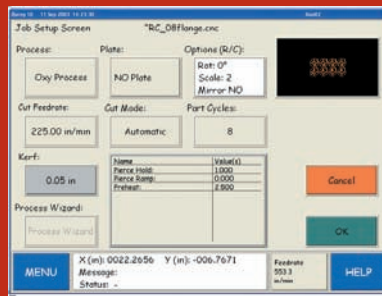
Eliminate dry runs and confirm the part program before cutting them with the PHANTOM's full color graphic display. View the cut path in real-time and monitor cut progress—especially important with underwater plasma. Use the zoom tools to verify part spacing and eliminate wasted or unusable product.



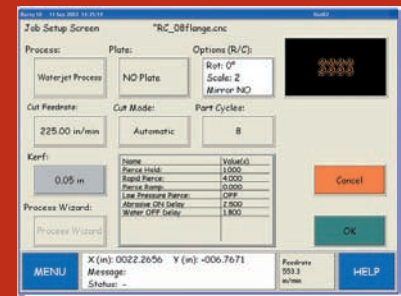
Full color Graphics



Plasma



Oxyfuel



Waterjet

Plasma Control *1

The Advanced Plasma Interface integrates automatic gas regulators and secondary height control boxes into a streamlined, state-of-the-art software package. Instead of walking to the plasma supply just choose your material, thickness, and consumable type right on the NC control. Once selected, send your cut chart data to the plasma and cause the plasma supply to change gas pressures and amperage. This interface will bring an end to paper charts and the industry one step closer to perfect cut quality.

Quick Plate Alignment *2

Quickly compensate for plate that is not aligned properly on the machine. The PHANTOM rotates the part program for proper placement on the true plate position. With a few simple screen prompts the PHANTOM rotates the part program for proper alignment with the plate. Virtually drop the plate and cut. This saves material and wasted time moving the plate into the correct cutting position.

Expandable Shape Library *3

Allows commonly used standard shapes to be designed right at the control. Touch the screen to input the required dimensions and follow a simple logical prompting process. Shapes are graphically displayed with dimension lines to assist the numeric entry process. A dynamic display draws the shape, which reduces guesswork. Now even complex shapes can be made consistently and accurately.

True Multitasking Environment

Increase operator productivity by performing many different tasks within the Windows® XP Embedded environment. Load a new part program, create or edit a part program, choose a new part program from the shape library, create or edit a program nest, check production messages, fill out productivity sheets, monitor consumables life—all at the same time and all while the machine is cutting!

Fast DXF File Conversion

The PHANTOM ST accepts direct downloads of CAD/CAM DXF files, which reduces the expense of third-party post processing software. Furthermore, the PHANTOM can automatically assign Lead In/Lead Out positions—or the operator can make these assignments manually.

Go To (Job Interrupt)

Interrupt the current cutting routine to cut a new part, move ahead multiple pierce points, recover from cut loss, recover from power loss, change torch consumables, interrupt a long nest, jump to the end of a part or nest, reverse cutting path—all quickly done at the touch of a button without losing machine position and without scraping valuable material!

Monitor and Track Consumables *4

The PHANTOM tracks torch consumable usage and can alert the operator when a consumable change is required. This feature will maximize consumable life and torch life. In addition, cut quality and part accuracy can be held to the highest levels.



Plasma Control ¹

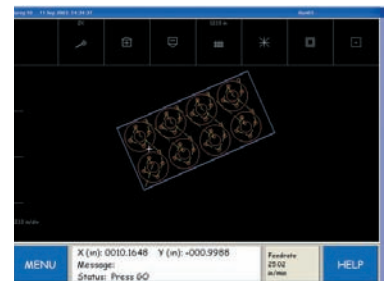
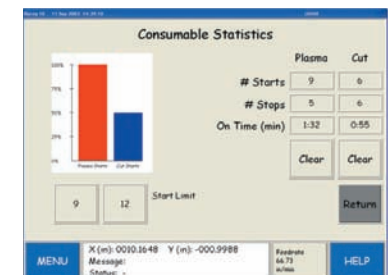


Plate Alignment ²



Shapes Library ³



Monitor Consumables ⁴

OTHER ADVANCED FEATURES

- Networking via Wireless or Fiber
- Remote Diagnostics
- Automatic DWG/DXF CAD file conversion
- 10-minute Quick System Recovery
- Job Interrupt and Power Loss Cut Recovery
- 50 Standard Shapes
- Programmable Laser Offset for Fast Part Alignment
- Load other 3rd party program/application software

TRUE SHAPE NESTING (optional)

True shape embedded nesting increases flexibility and productivity in the Burny Phantom control.

PRODUCTIVITY TRACKING (optional)

An embedded productivity tracking utility allows companies to monitor the actual productivity of the machine by a network connection. This feature can help identify bottlenecks on the shop floor.

HARDWARE PLATFORM

- Interface: New 10.4" (264mm) TFT with USB Touch Screen
- Processor: 2.2 GHz Mobile CPU (or faster)
- Memory: 1 GB DDR3 RAM
- Operating System: Windows® XP Embedded
- Connectivity Options: USB, Network Ready (Optional)
- Physical Controls: 8 Direction Keypad, Start, Stop, Go To, Reverse, and Feedrate Potentiometer
- Operators Console Functions for:
 - 6 oxy fuel
 - 2 plasma
 - Marker
 - High/low preheat
 - Water spray
 - Provisions for Automatic Oxy-Fuel Ignition
 - Provisions for Oxy-Fuel Height Control
 - Provisions for Plasma Voltage Height Control
 - Auxiliary functions
 - 1 Additional Plasma
- Drive System (Standard):
 - 2 axis, 250 watt DC drive amplifiers
- Drive System (Options):
 - 3 axis 250 watt DC drives
 - 2 or 3 axis AC drives
 - DC and AC motors
 - High accuracy gearboxes
 - Drive system cables
- Physical Dimensions: 17.6" (448 mm) wide, 19" (482.6 mm) high, 16.5" (419 mm) deep
- Weight: 65 lbs (29.6 kg)
- Power Required: 115/230 Auto Switching @ 50/60 Hz
- Operating Environment: 32 to 122°F (0 to 50°C) 95% Humidity (Non-Condensing)
- Partial List of Operating Languages: Swedish, French, Russian, Spanish, Chinese, Italian, Norwegian, and German.
- CE Compliant

OTHER WINDOWS ® XP EMBEDDED FEATURES

The Burny Phantom utilizes Windows ® XP Embedded, which provides the ability to take advantage of several productivity tools including remote desktop and USB (Universal Serial Bus) devices. Remote desktop provides the ability to access and operate a remote computer from the Burny Phantom while USB memory devices provide easy program transfer at the fastest download speeds available.

BURNY • KALIBURN, Inc.
4130 Carolina Commerce Parkway
Ladson, SC 29456
tel: 843.795.4286 or 800.252.2850
kaliburn.sales@itt.com
burnysales@itt.com

ITT Control Technologies GmbH
Werkstrasse 5
D-64732 Bad Koenig, Germany
tel: +49 6063 9314 0
burny.de@itt.com

www.burny.com • www.kaliburn.net

BurnyPhantom 060711