



ITT

BURNY

PHANTOMST

PC-based Controller



The most advanced technology in PC-based controls for maximizing productivity, improving quality, and reducing costs!

BURNY PHANTOMST

The Burny PHANTOM ST is the latest advancement from the leader in PC-based motion controls. The PHANTOM ST features a PC-based platform combined with 2 or 3 axis drives and a plasma focused operators console mounted within a single integrated cabinet. The PHANTOM ST incorporates the latest CNC technology on a proven platform engineered to increase productivity and reduce costs.

Utilizing Windows® XP Embedded, the PHANTOM ST motion control software produces extremely precise and repeatable cut parts. The system contains many software features not found in comparable numerical controls such as true multitasking and DXF file conversion. The operators console contains interface for full plasma functionality. Optional functionality can be added that will allow an additional plasma station (2 max) and oxy-fuel cutting operations (2 max).

The Burny PHANTOM ST can operate any cutting machine and interfaces with virtually all plasma systems. It is available as an upgrade to existing machines or can be delivered on a new machine. Backed by Burny's extensive staff of experienced in-house engineers and service technicians, the PHANTOM ST is ready to perform in your shop today!

As a premium member of the Burny family of numerical controls, the Burny PHANTOM ST continues a 35-year history of improving the productivity and increasing the profits of our worldwide customer base. In addition to our industry leading line of numerical controls, Burny also offers drive systems, AC and DC motors, gearboxes, torch stations and height control systems. Demand Burny and contact us today to learn more about the added value only Burny can provide.



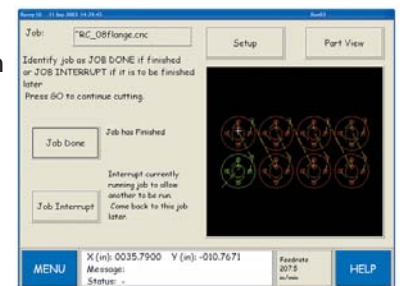
STANDARD FEATURES

Bright Touch Screen Interface

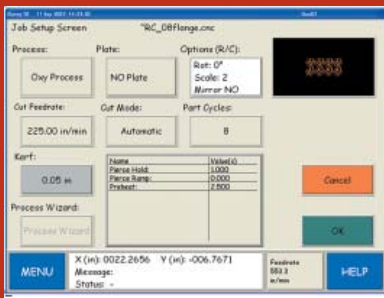
With a 10.4" (264 mm) industrial-grade touch screen, the PHANTOM ST provides an extremely user-friendly machine interface. The wide viewing angle and high resolution graphics generate a bright display even in the harshest shop floor environment, allowing operators to easily and effectively move through the menus and guide the cutting machine.

Full Color, Interactive Graphic Display

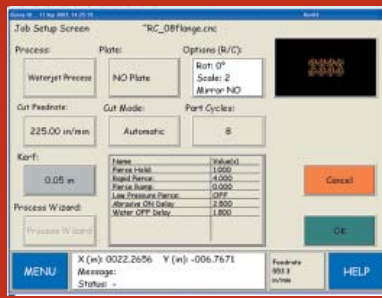
Eliminate dry runs and confirm the part program before cutting them with the PHANTOM ST's full color graphic display. View the cut path in real-time and monitor cut progress--especially important with underwater plasma. Use the zoom tools to verify part spacing and eliminate wasted or unusable product.



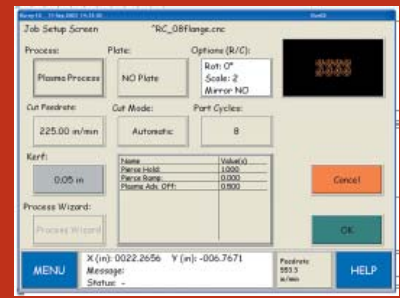
Full color Graphics



Oxyfuel



Waterjet



Plasma

Plasma Control

The Advanced Plasma Interface integrates automatic gas regulators and secondary height control boxes into a streamlined, state-of-the-art software package. Instead of walking to the plasma supply just choose your material, thickness, and consumable type right on the NC control. Once selected, send your cut chart data to the plasma and cause the plasma supply to change gas pressures and amperage. This interface will bring an end to paper charts and the industry one step closer to perfect cut quality.

Quick Plate Alignment

Quickly compensate for plate that is not aligned properly on the machine. The PHANTOM ST rotates the part program for proper placement on the true plate position. With a few simple screen prompts the PHANTOM ST rotates the part program for proper alignment with the plate. Virtually drop the plate and cut. This saves material and wasted time moving the plate into the correct cutting position.

Expandable Shape Library

Allows commonly used standard shapes to be designed right at the control. Touch the screen to input the required dimensions and follow a simple logical prompting process. Shapes are graphically displayed with dimension lines to assist the numeric entry process. A dynamic display draws the shape, which reduces guesswork. Now even complex shapes can be made consistently and accurately.

True Multitasking Environment

Increase operator productivity by performing many different tasks within the Windows® XP Embedded environment. Load a new part program, create or edit a part program, choose a new part program from the shape library, create or edit a program nest, check production messages, fill out productivity sheets, monitor consumables life—all at the same time and all while the machine is cutting!

Fast DXF File Conversion

The PHANTOM ST accepts direct downloads of CAD/CAM DXF files, which reduces the expense of third-party post processing software. Furthermore, the PHANTOM ST can automatically assign Lead In/Lead Out positions—or the operator can make these assignments manually.

Go To (Job Interrupt)

Interrupt the current cutting routine to cut a new part, move ahead multiple pierce points, recover from cut loss, recover from power loss, change torch consumables, interrupt a long nest, jump to the end of a part or nest, reverse cutting path—all quickly done at the touch of a button without losing machine position and without scraping valuable material!

Monitor and Track Consumables

The PHANTOM ST tracks torch consumable usage and can alert the operator when a consumable change is required. This feature will maximize consumable life and torch life. In addition, cut quality and part accuracy can be held to the highest levels.



Plasma Control



Plate Alignment



Shapes Library



Monitor Consumables

OPTIONS

Networking

Harness the power of network connectivity by quickly accessing remote files and directories directly from the PHANTOM ST or connect to other computers via the same network. Increase programming flexibility by downloading programs and information from remote locations. With network connection speeds, program transfer takes just seconds, even for large part programs. Further, take full advantage of wireless connections and eliminate potential RF interference and cable maintenance.

MTC's TurboNest® BE

Increases plate utilization by 10% or more! The PHANTOM ST can be equipped with true shape automatic nesting. Additional cost savings can be realized when TurboNest® BE is used in conjunction with the multitasking feature. The operator simply selects plate size, chooses the parts and TurboNest automatically places the parts for an upcoming job, while the machine is cutting. In addition, the PHANTOM ST can be configured for remnant nesting. Just outline the remnant and use TurboNest® BE to automatically place parts on the remnant plate—quickly turning scrap into dollars!

MTC's JobTrak

MTC's JobTrak allows you to monitor the cutting machine's productivity in real-time. Track actual cutting time, downtime, and receive detailed reports on actual job related costs. JobTrak provides the tools that allow you to pinpoint bottlenecks in cutting efficiency and gives you the ability to increase profits by making informed decisions regarding workflow on the shop floor.

Other Windows® XP Embedded Features

The Burny PHANTOM ST utilizes Windows® XP Embedded, which provides the ability to take advantage of several productivity tools including remote desktop and USB (Universal Serial Bus) devices. Remote desktop provides the ability to access and operate a remote computer from the PHANTOM ST while USB memory devices provide easy program transfer at the fastest download speeds available.

HARDWARE PLATFORM

- Interface: New 10.4" (264mm) TFT with USB Touch Screen
- Processor: 1.5 GHz Intel Mobile(or faster)
- Memory: 1 GB DDR RAM
- Operating System: Windows® XP Embedded
- Connectivity Options: USB, 3.5" Floppy Disk Drive, Network Ready (Optional)
- Physical Controls: 8 Direction Keypad, Start, Stop, Go To, Reverse, and Feedrate Potentiometer
- Operators Console Functions for:
 - 1 Plasma
- Optional Operators Functions:
 - 1 Additional Plasma
 - 2 Oxy-Fuel Gas (manifold gases, preheat, and oxygen functions only)
- Drive System (Standard):
 - 2 axis, 250 watt DC drive amplifiers
- Drive System (Options):
 - 3 axis 250 watt DC drives
 - 2 or 3 axis AC drives
 - DC and AC motors
 - High accuracy gearboxes
 - Drive system cables
- Physical Dimensions: 17.6" (448 mm) wide, 17" (432 mm) high, 16.5" (419 mm) deep
- Weight: 60 lbs (27.3 kg)
- Power Required: 115/230 Auto Switching @ 50/60 Hz
- Operating Environment: 32 to 122°F (0 to 50°C) 95% Humidity (Non-Condensing)
- Partial List of Operating Languages: Swedish, French, Russian, Spanish, Chinese, Italian, Norwegian, and German.
- CE Compliant

Cleveland Motion Controls, Inc.

7550 Hub Parkway
Cleveland, OH 44125
tel: 216.524.8800 or 800.321.8072
burnysales@itt.com

KALIBURN, Inc.

455 Fleming Road
Charleston, SC 29412
tel: 843.795.4286 or
800.252.2850
kaliburn.sales@itt.com

www.burny.com

Cleveland Motion Controls GmbH

Werkstrasse 5
D-64732 Bad Koenig, Germany
tel: +49 6063 9314 0
burny.de@itt.com

Cleveland Motion Controls is now part of ITT Corporation